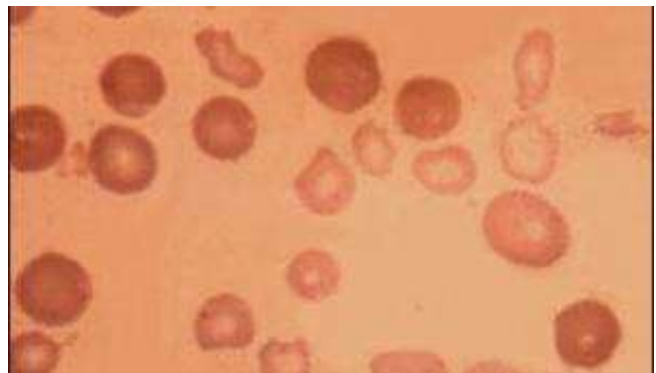




Organisation for Sickle Cell Anaemia Research & Thalassaemia Support
(OSCAR SANDWELL CO LTD)
ANNUAL REPORT
1 April 2010 – 31 March 2011



Sickled Red Blood Cell



Thalassaemia – small red blood cells



Normal Red Blood Cells

THE ORGANISATION IS SUPPORTED

BY



ACKNOWLEDGMENTS

We would like to take the opportunity to express our sincere thanks and appreciation to everyone who has given their support to the organisation.

CONTENT

	Page number
Staff and Management	4
Charity/Company details	5
Introduction to OSCAR Sandwell	6
What is Sickle Cell and Thalassaemia?	7
Chairman foreword	8
Sub Committee Report	9
Manager Report	10-11
Core service report	12-13
Thalassaemia Work	14-15
Administration department report	16-18
Annual Accounts Balance Sheet	Appendix 1 Appendix 2

OSCAR SANDWELL CO LTD MANAGEMENT COMMITTEE 2010/2011

Officers:

Chairperson	Donald Campbell
Vice Chairperson	Roy Hewitt
Treasurer	Clive Fitchett
Clarence Cameron	Director
Co-opted member	Kevin Dunkley

Staffing:

Rachel McFee	Centre Manager/Secretary to Board
Lorna Patterson	Administrator
Khudeja Khanom	Support and Development Worker
Abdul Alim	Community Champion
Lotaya Malcolm	Support and Development Worker
Sophia Perkins	GG Children's Centre – Support Worker
Stan Simms	Caretaker
Mary Millard	Cleaner
Afia Begum	Sessional Worker
Theocharia 'Hara' Lioliou	Sessional Worker

Volunteers:

Karl Henry	Kevin Dunkley	
Wendy Mclean		
Joyce Nelson	Elaine Dixon	Thandeka Brown
Tyabb Rashid	Mary Kumari	Jean McFee
Balbinder Kaur	Hazrat Begum	Jessica Stone
Malissa Thorpe	Anthony Turner	
Glory Ebelugwu	Leanne Hodgkiss	
Louise Parry		

Work Experience Placement:

Talisha Lewis
Thandeka Brown
Radika Campbell
Kimberley Crossdale
Charlie Kaylia
Samera Ali

Registered Charity Office:	120 Lodge Road West Bromwich West Midlands B70 8PL
Registered Charity Number:	1080599
Company Registration Number	373668
Solicitors:	Shakespeare Solicitors 10 Bennett's Hill Birmingham B2
Reporting Accountant	Haines Watts Worcester Limited Chartered Certified Accountants Britannia court 5 Moor Street WORCESTER WR1 3DB
Bankers	Unity Bank PLC Nine Brindleyplace Birmingham B1 2HB

INTRODUCTION

MISSION STATEMENT

Working together with service users, voluntary, statutory services and stakeholders to improve the quality of life for people affected by Sickle Cell and Thalassaemia in the Sandwell area.

OSCAR (Organisation for Sickle Cell Anaemia Research) is located in West Bromwich in the Borough of Sandwell. OSCAR Sandwell is a voluntary organisation with charity and company limited status and managed by a Board of Directors. The ethos of the organisation is to provide direct services that address the well – being and collective needs of people with Sickle Cell and Thalassaemia.

OSCAR as it stands was founded in 1975 by a ‘Sickler’ who through personal experiences, realised there was inadequate information available to people affected directly or indirectly by the blood disorders, the public and medical professionals. OSCAR is the pioneering Sickle Cell organisation in the United Kingdom.

OSCAR operates as both providers of services and as an advocate for sufferers and their families, articulating community needs and campaigning for the development of appropriate services. The activities of the organisation have progressively increased as the understanding of the particular needs of people affected and their families have intensified.

OSCAR Sandwell was established in March 1988 in response to a growing concern expressed by members of the community about the lack of information and support for people with Sickle Cell and Thalassaemia in the Borough of Sandwell.

In July 1998 the Centre at Lodge Road was formally opened by Derrick Heaven, His Excellency, The Jamaican High Commission.

The organisation for 23 years has developed and established a comprehensive service to meet the needs of Sickle Cell and Thalassaemia sufferers and their carers. In addition the organisation strives to work proactively with both statutory and voluntary agencies to educate schools, community groups, health professionals, churches and the general public in raising the awareness about the above blood disorders.

What is Sickle Cell and Thalassaemia?

Sickle Cell disorder is a condition that affects red blood cells in the body which contains the protein called haemoglobin (Hb). People with Sickle Cell Anaemia have Sickle haemoglobin (HbS) which is different from the normal haemoglobin (HbA). Normally, red blood cells last for about 120 days though for sicklers, the red blood cells die after between 30 to 60 days. As a result of the shorter life span of the red blood cells, with low production rates, anaemia occurs i.e. low iron content of the blood.

When sickle haemoglobin (HbS) gives up its oxygen to the tissues, it sticks together to form long rods inside the red blood cells making these cells rigid and sickle-shaped. Normal red blood cells bend easily but these rigid *sickled* red blood cells are unable to move easily through blood vessels, blocking them, which in turn restricts oxygen from getting through to where it is needed. This restriction of oxygen flow through the blood can cause severe pain and can possibly lead to the damaging of vital organs.

Sickle Cell disorder is a condition that normally affects people of African, Caribbean, Middle Eastern, Asian and Mediterranean origin, but not exclusively.

Thalassaemia, like Sickle Cell, is an inherited disorder of the haemoglobin. There are two main Thalassaemia types, Thalassaemia Major and Thalassaemia Minor (trait).

A normal haemoglobin molecule contains four protein (globin) chains (two alpha globin chains and two beta globin chains). Different genes are responsible for producing each chain. In Thalassaemia, there is an inherited defect in one of these genes. If the alpha chain is affected, this causes Alpha Thalassaemia. If the beta chain is affected then this causes Beta Thalassaemia. There are a number of different types of Thalassaemia within these groups, alpha thalassaemia being less diverse than beta thalassaemia.

Where a person has inherited haemoglobin A from both parents, they will have **two** usual beta genes (b^b), one from each parent, and four alpha genes (aa/aa), one pair from each parent.

They would, therefore, produce normal amounts of BETA and ALPHA to make healthy red blood cells. Some people inherit one usual and one unusual Beta gene, in which case they have a condition known as Beta Thalassaemia Major (Hb AbThal), sometimes referred to as a trait. Some people do not inherit the usual number of Alpha genes in which case they would have a condition known as Alpha Thalassaemia Minor (trait).

CHAIRMAN Foreword 2010-2011

A new era of dramatic changes is upon us; the world the nation, OSCAR Sandwell.

As we must keep pace with the times, our Organisation has been, and still is, faced with profound challenges in order to do so. To meet and indeed enhance our mission statement " **to improve the quality of life for people affected by Sickle Cell and Thalassaemia in Sandwell area**" we have embarked upon various phases of projects and awareness, whilst exercising severe financial reductions and constraints.

This has not been easy especially with the constant threat, and reality, of **`Government Cut Backs`** which has affected numerous organisations. Whereas some charities have had their funding cut completely we can be thankful that, to date, OSCAR Sandwell are amongst the few that are still recognised as a worthy cause. We have however been proactive by establishing a business, known as OSCAR Sandwell Enterprise (OSE), with the aim of creating self-sustain funding in support of our organisation in the future.

We aim to re-establish a full complement of sub committees so that OSCAR can be supported as it should, by each area representatives focusing on relevant tasks as required. We had lots of interests from potential members at our members events who hopefully will join a committee according to their skills, experience and interest. The emphasis is to start with the rebuilding of the Social Activity group in order to rekindle the social ambiance and sense of belonging of our clients and members.

There is a need to enhance the future growth of our Organisation with the mind set of having a more holistic approach in our thinking and activities in support of our clients, carers and members. It is hoped that we can extend our services to be a Centre that supply or sign post clients every need.

We have been in collaboration with our Stakeholders, and are a member of the All Party Political Group (APPG), with the aim of promotion and awareness of Sickle Cell and Thalassaemia at the highest level.

The mood of our clients, staff and members is still buoyant, with an optimistic view of a better future, sooner rather than later. However, it is now time to face the harsh reality and a real threat of not being able to carry out our mission statement. I therefore call upon all concerned to continue reaching the depth and height of skills, knowledge and experience that we all possess in order to meet our goal.

I **must** thank all staff and volunteers at OSCAR for their great effort and endeavour in keeping the Organisation in the balance. It is only with your belief and dedication that we will realise a brighter future for this worthy cause.

Donald Campbell - Chair

SUB COMMITTEE REPORTS

PERSONNEL COMMITTEE

2010-2011

The Personnel Committee is one that has and must function in order to maintain consistency and stability of the Organisation. Although reduced from its full establishment of members, its role and existence still remains very effective. Due to lack of volunteers, this has meant that the work of the other sub committees such as Finance, Quality, Building and social activity issues have been dealt with by Personnel as a natural course of action.

Personnel has had to focus on keeping up to date with relevant employment laws, updating our policies and procedures and other human resource issues. The recruitment processes were also updated to make it more robust, which we utilise in successfully employing new staff and sessional workers.

The Personnel Committee has functioned very well and there is definite positivity and encouragement from current members, staff and volunteers, regarding its future. We envisage that all other sub committees will be able to use this as a template to develop respective areas of work. Each sub committee is an integral part of the infrastructure of the organisation as they feed directly into the Board for decisions to be made.

It is the aim of the Personnel Committee to continue its work in actively rebuilding other areas of support to our Organisation.

My thanks to everyone for your work, time and dedication over the past year.

Donald Campbell- Chair of Personnel Committee

CENTRE MANAGER'S REPORT 2010-2011

In 2010-2011 the organisation continuing to strengthen its infrastructure and continue to can provide the best services possible and best use of resources we have available. With the change in government and cutting of budgets, the third sector as a whole has had to re –evaluate our ongoing services and those for the immediate future.

During April 2010- March 2011 the organization has continued to work towards meeting it's strategic objectives for the past 12 months. We have continued to fulfil our legal duties and obligations to the Charity Commission and Companies House, all returns have been submitted to the relevant bodies as required.

The profile of OSCAR Sandwell Company Limited continues to make links locally, regionally and nationally. Our key activities are the provision of fundraising, guidance, advice and information, screening, education and training, health promotion, self help group, social activities, volunteers, student placement and work experience.

Core funding for OSCAR Sandwell is provided by Sandwell Metropolitan Borough Council (SMBC) and Sandwell Primary Care Trust (PCT) through Service level agreement or grant which is measured through performances and outputs. With external funding from a variety of sources to support additional staffing hours.

Volunteers have contributed to the delivery of our services ranging from project work, administration and health promotion activities. Last year a total of 16 volunteers helped to accumulate over 384+ volunteer hours. Volunteering continues to be a two-way process. It also offers an excellent opportunity for personal and professional development, skills sharing, developing new areas of knowledge, building on your professional network and creating lasting personal relationships.

Our focus was on developing our services for those affected by Sickle Cell or Thalassaemia Blood disorder in Sandwell, the Black Country and surrounding area of the West Midlands. We have worked in partnership and collaboration with many statutory and voluntary organisations to enable improved services to our client group.

Community involvement- We continue to work in partnership to develop and deliver within the local Sandwell and surrounding areas. Including local schools and community centres. This partnership has helped to raise awareness of OSCAR Services. The centre continues to offer its room hire service for individuals, groups and organisations both Statutory and Voluntary who have all benefited from the service. This again creates and continues to raise further awareness about OSCAR work, and often generates interest. Our members and clients actively engaged in our Annual Conference, two members day events and Annual General Meeting.

Student placements – Places were allocated to 13 school/college work experience young people. We are happy that we have been able to contribute to the education and training young people. We were able to offer placements to 4 University students from Birmigham City University.

Partnership working - partnership continues within this financial year with a range of voluntary and statutory agencies/organisation; this enabled the development and support of initiatives to

improve services to our client group. We continued liaise and work in partnership which allowed organisations to support our events and activities, these were British Heart Foundation, De Montfort University, Sickle Cell Society, PSNG, ASYABI, UKTS, the NHS and central government in the form of the All Party Parliamentary Group (AAPG) for Sickle Cell and Thalassaemia headed by Dianne Abbott MP.

Black Country and Surrounding Area Strategy – We have seen the need to liaise and communicate with other Sickle Cell and Thalassaemia providers, OSCAR Sandwell attended conferences and events hosted by NHS providers, Sickle Cell Society based in London, ASYABI (Association of Sickle Cell sufferers of Yorkshire for Africa and Basic Information) based in Leeds and PNSG (Patient Network and Support Group) based in Birmingham.

Governance – The organisation has continued to worked toward improving and strengthening our governance. to enable us to demonstrate our accountability, transparency, effectiveness and efficient, equitable whilst working within the rule of the law. This is an ongoing priority for the organisation.

FUTURE PLANS 2011/2012

- To bring together and inform all stakeholders
- To carryout research into the education & training needs of our service users.
To implement fundraising strategy for the sustainability of the organisation and
- various future projects and services.
- Continue to strengthen our governance
- Collaboration and partnership working with peer organisations
- Continue to offer core services to our membership and wider community.
- Continue to develop children and young people activities
- Work towards the PQASSO
- To strengthen our volunteer activities
- Continue to develop our services across the Black Country and the surrounding area
- Develop the services of our social enterprise business.

In conclusion - our focus has been continuing to develop our services for those affected by Sickle Cell or Thalassaemia Blood disorder in Sandwell, the Black Country and surrounding area of the West Midlands. We have worked in partnership and collaboration with many statutory and voluntary organisations to enable improved services to our client group.

Rachel McFee – Centre Manager/Secretary

CORE SERVICES
REVIEW OF ACTIVITIES AND FUTURE DEVELOPMENTS
2010-2011

Our main focus continued to be developing our services for those affected by Sickle Cell or Thalassaemia Blood disorders in Sandwell and surrounding area of the Black Country West Midlands. We have worked in partnership and collaborated with many statutory and voluntary organisations to achieve the aims and objective of the organisation in service provision.

Advice and Information –The organisation continues to provide advice and information to members of the organisation, community groups and professionals. The majority of the requests made have been from local people and users of the service. This year **902** accessed the project for advice and information on Sickle Cell and Thalassaemia.

Target 2010-2011	Actual
120	475

Support and advocacy – OSCAR continues to offer support and advocacy services to its client group by providing such service as hospital and home visits to enable us to support and advocate on behalf our client group, but with an emphasis to empowering our clients to also help themselves. A lot of time, work and one to one support has gone into supporting clients with issues such as benefits/financial funding, immigration, social services and housing issues making the appropriate referrals where necessary. Staffs have all undergone brief immigration training.

One to ones (home and hospital visits) - we have had a number of hospital visits this year with very severe crises. OSCAR has made every attempt to be there to help families with hospital and home visits

Target 2010-2011	Actual
100	139

Education and Training – We have continued to offer education and training to voluntary, community and statutory organisations this year, the number of people receiving a service was **175** individuals.

Target 2010-2011	Actual
75	175

Screening – OSCAR renewed its Service Level Agreement with the Birmingham Sickle Cell & Thalassaemia Service, (provided by Heart of Birmingham Teaching PCT Provider Services) based in Ladywood. The programme started much later in the year and individuals were therefore not able to access the service. In total we screened **58** individuals. This service was reviewed with feedback from individuals and its delivery was change to holding sessions at local community venues. This has proven to be hugely successful.

Target 2010-2011	Actual
35	58

Children summer project – This year summer project which was conducted in the 2nd quarter and continues to be a huge success. This is partly funded by Sandwell PCT and the West Bromwich Building society.

The aims and objectives of the children and young people summer workshop 10 was to engage our Sickle Cell and Thalassaemia children and young people (and their siblings and friends) in workshops that will enable them to express themselves through the ART. Giving the children the opportunity to focus on how they feel about the illness and then to convey that through music, drama and dance was an indirect way to gather information about how we can support and better engage with our younger clients. 20 children and young people took part in the project. 49 children, members of their family, staff and volunteers enjoyed a day out to Skegness.

Health promotion activities

We have endeavoured to have as much health awareness as possible to help raise the profile of both the condition and the organisation and what it does to support service users.

Target 2010-2011	Actual
10	43

Counselling – we have now re-established general counselling at Oscar Sandwell, we have a trainee counsellor coming into the centre on Mondays between 10-4; this is accessible to all the clients. We have had a great interest and clients continue to use this service consistently.

This year we have worked really hard on reconnecting back with previous clients and also welcoming new ones alike. We have strived to raise our profiles in the hospitals, workplaces, school etc. this is proving to be rewarding. We look forward to the coming year with anticipation and renewed commitment for greater things to be done.

Support and Development Worker –Lotaya Malcolm
Support and Development Worker – Khudeja Khanom

THALLASAEMIA WORK

THALASSAEMIA WORK (2010 – 2011)

Work Undertaken By Community Champion

In April 2010 in my role as Community Champion, I continued the work on Thalassaemia. This included visiting Thalassaemia clients at home, hospital and treatment centres. We were able to support clients in various ways such as completing grants forms, benefit forms, speaking to schools on their behalf and also carried out awareness sessions at local voluntary organisations, schools and day care centres.

In May 2010 we organised an event to celebrate International Thalassaemia Day. International Thalassaemia Day is celebrated all over the world on 8th May. We believed it would be a great opportunity to invite our clients and the community so we could all celebrate together and raise awareness of Thalassaemia.

The event was held at OSCAR Sandwell centre and was well attended by over 50 people. We invited other local organisations to come display their information. We had organisations such as National Blood Service, Confidence and Wellbeing, Forever Living Products and many more. OSCAR Sandwell's patient and carer led support group called Thalassaemia Awareness and Support Group did a short presentation about their group and spoke about their aims. The day was concluded with some Bollywood dance performances by Bollywood Academy and their teacher Faraz Chohan also got people to come in front and learn some moves.

OSCAR Sandwell's staff attended a patient-led event called Thal Goes To The Oscars which was held in Cambridge during May. Aim of this event was to raise awareness of Thalassaemia and this was done by patients from the UK making short videos about themselves living with Thalassaemia. All participants received awards for their hard work. I also took part in this work and helped Preeti Dhanak Steele (organiser) with promoting the event. 200 people attended the event. OSCAR Sandwell's staff described the event as "SPECTACULAR".

In July our Support and Development worker was able accompany a Thalassaemia client while he was being interviewed by Sickle Cell and Thalassaemia Screening Programmes members. The aim of this was to raise awareness of patients' experience of living with Sickle Cell and Thalassaemia. They also did a photo shoot with the client and have used the pictures in their annual report and will also use it to promote their services throughout other forms of media. The client was grateful that we were able to support him.

Sickle Cell and Thalassaemia Screening Service held an event during October to celebrate Sickle Cell and Thalassaemia Awareness Day. This was held at Birmingham Central Library. OSCAR Sandwell and TASG were able to have an information stand and help to raise awareness about the two conditions to the general public. Throughout the day people were able to speak to me and learn more about OSCAR Sandwell's services

and the people that it supports. Some people got themselves tested to find out if they are carriers of Sickle Cell or Thalassaemia. SCAT Screening Service was delighted to work with us.

In September TASG applied to Roald Dahl for a grant to carry out work with young Thalassaemia patients and the community and were successful.

End of November OSCAR Sandwell and the members of TASG held the Eid and Diwali event to raise awareness about Thalassaemia to the wider Asian community and to make young Thalassaemia patients and their families aware of that there is a support group out there for them. This event was aimed to create a social gathering between the community and the young Thalassaemia patients including their families as to break social isolation which they face every day of their lives and by joining in to celebrate Eid and Diwali it would create an overwhelming atmosphere.

I started the event by welcoming everyone and wishing everyone Happy Eid and Diwali as the event was to celebrate these two events together with the Thalassaemia patients and the community. TASG did a presentation about what Thalassaemia is and TASG's role. TASG spoke about the effects on an individual and their family also how it is passed on. I also raised the profile of TASG (Thalassaemia Awareness and Support Group) as a short insight was given to why this group was established and the overall aims which TASG will strive to achieve. After the presentation questions were asked and answered. People were happy to know about Thalassaemia as it was an eye opener for them.

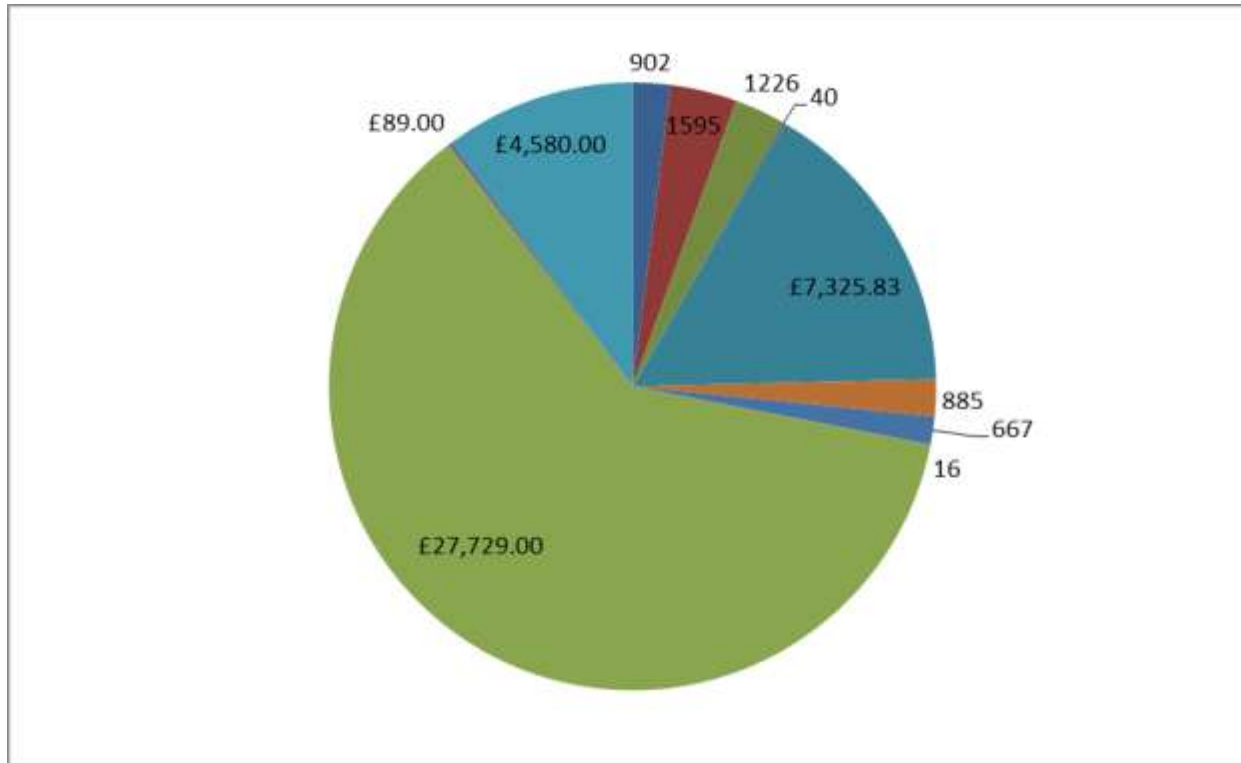
Lunch was served to everyone. People enjoyed the food and watched a marvellous performance by a dance group company called Nachda Saansar. Young children from the ages of 6 to 11 did a routine Asian dance with instruments called Dhol. We had an attendance of over 50 people including adults, young children and Thalassaemia patients.

In February OSCAR Sandwell, OSCAR Birmingham and TASG interviewed 2 Thalassaemia patients and 1 carer for 2 sessional workers position. We recruited a patient and a carer as we believed they were best for this position.

Last year on our Thalassaemia client database we had 40 clients but now we have 70 Thalassaemia clients who originate from Birmingham, Sandwell, Dudley, Wolverhampton, Coventry, Worcester, Cambridge, London and Oxford.

Report written by: Abdul Alim, Community Champion

STATISTICS
ADMINISTRATION AUDIT REPORT FOR APRIL 2010 TO MARCH 2011



ADMIN AUDIT REPORT FOR APRIL 2010 to MARCH 2011

VISTORS	902	DONATIONS	£27,729.00
OUT GOING TELEPHONE CALLS	1595	COLLECTION BOX	£89.00
INCOMING CALLS	1226	BCU STUDENTS	£4,580.00
VOLUNTEERS	40	TRAINEES/SCHOOL PLACEMENTS	16
ROOM HIRE	£7,325.83		
OUT GOING POST	885		
INCOMING POST	667		

MONEY DONATED TO THE ORGANISATION FOR THE PERIOD DECEMBER TO 2010 – 2011.

DATE	NAME	AMOUNT £
May 2010	Swedish Orphan-Thalassaemia day	150.00
August 2010	Stock land Green Methodist Church	55.00
August 2010	Ex-Service Personnel Reunion	100.00
September 2010	Club Carib -ACRC	114.57
3 rd December 10	Ms Ursella Walker	25.00
8 th December 2010	Dorcas Housing	556.00
December 2010	The Centre for Equality & Diversity	1400.00
14 December 10	Mr & Mrs Bailey	105.00
13 TH December 2010	Sharon Rowe	35.00 186.10
10 th December 10	Cllr Sidhu	50.00
20 th December 10	Mr Ronald Beckford	50.00
20 December 10	Rev Eve Pitt –Holy Trinity Church	104.00
December 2010	Aston Villa Football Club	25.00
25th January 2011	University Hospital Bospital irmingham	30.00

MONEY RAISED ON BEHALF OF CLIENTS 2010-2011

Charity	Client	Amount
Roald Dahl	Thandeka Brown	£500.00
Roald Dahl	Iman Solomon	£350.00
Buttle UK	Patricia Brocklesby	£200.00-Electicial goods
Sickle Cell Society	Iveraldo Santos	£500.00
Buttle UK	Funmilya Amusa	£250.00
Roald Dahl	Kanwal Choudhary	£490.00
Buttle UK	Sandra Smith	£300.00
		£2590.00

**ORGANISATION FOR SICKLE CELL ANAEMIA (appendix 1)
RESEARCH (OSCAR) SANDWELL COMPANY LTD**

**Statement of Financial Activities
for the year ended 31 March 2011**

	Note	Unrestricted funds £	Restricted funds £	2011 Total funds £	2010 Total funds £
INCOMING RESOURCES					
Incoming resources from generated funds					
Voluntary income	2	30,416	-	30,416	2,260
Activities for generating funds	3	24	-	24	-
Investment income	4	1	49	50	37
Incoming resources from charitable activities					
Charitable		<u>5,105</u>	<u>120,482</u>	<u>125,587</u>	<u>108,606</u>
Total incoming resources		35,546	120,531	156,077	110,903
RESOURCES EXPENDED					
Charitable activities					
Charitable	5	8,357	108,815	117,172	122,146
Governance costs	6	<u>1,200</u>	-	<u>1,200</u>	<u>1,250</u>
Total resources expended		9,557	108,815	118,372	123,396
NET INCOMING/(OUTGOING) RESOURCES					
		25,989	11,716	37,705	(12,493)
RECONCILIATION OF FUNDS					
Total funds brought forward		4,245	220,723	224,968	237,461
TOTAL FUNDS CARRIED FORWARD		<u>30,234</u>	<u>232,439</u>	<u>262,673</u>	<u>224,968</u>

**ORGANISATION FOR SICKLE CELL ANAEMIA (appendix 2)
RESEARCH (OSCAR) SANDWELL COMPANY LTD**

**Balance Sheet
At 31 March 2011**

	Note	2011 Total funds £	2010 Total funds £
FIXED ASSETS			
Tangible assets	10	219,626	216,738
CURRENT ASSETS			
Debtors: amounts falling due within one year	11	4,476	3,182
Cash at bank and in hand		<u>42,759</u>	<u>7,375</u>
		47,235	10,557
CREDITORS			
Amounts falling due within one year	12	(4,188)	(2,327)
		<u>43,047</u>	<u>8,230</u>
NET CURRENT ASSETS			
		<u>43,047</u>	<u>8,230</u>
TOTAL ASSETS LESS CURRENT LIABILITIES		262,673	224,968
		<u>262,673</u>	<u>224,968</u>
NET ASSETS		<u>262,673</u>	<u>224,968</u>
FUNDS	13		
Unrestricted funds		30,234	4,245
Restricted funds		<u>232,439</u>	<u>220,723</u>
TOTAL FUNDS		<u>262,673</u>	<u>224,968</u>

**ORGANISATION FOR SICKLE CELL ANAEMIA (appendix 2 cont..)
RESEARCH (OSCAR) SANDWELL COMPANY LTD**

**Balance Sheet – continued
At 31 March 2011**

The charitable company is entitled to exemption from audit under Section 477 of the Companies Act 2006 for the year ended 31 March 2011.

The members have not required the charitable company to obtain an audit of its financial statements for the year ended 31 March 2011 in accordance with Section 476 of the Companies Act 2006.

The trustees acknowledge their responsibilities for

- (a) ensuring that the charitable company keeps accounting records that comply with Sections 386 and 387 of the Companies Act 2006 and
- (b) preparing financial statements which give a true and fair view of the state of affairs of the charitable company as at the end of each financial year and of its surplus or deficit for each financial year in accordance with the requirements of Sections 394 and 395 and which otherwise comply with the requirements of the Companies Act 2006 relating to financial statements, so far as applicable to the charitable company.

These financial statements have been prepared in accordance with the special provisions of Part 15 of the Companies Act 2006 relating to small charitable companies and with the Financial Reporting Standard for Smaller Entities (effective April 2008).

The financial statements were approved by the Board of Trustees on and were signed on its behalf by:

.....
Trustee
